

**THREE RIVERS FLY FISHERS**  
**Summer Outing**  
**Island Park, Elkhart Indiana**  
**Sunday July 24, 2016**

Island Park in Elkhart is located where the Elkhart River empties into the St. Joe River. There is plenty of good smallmouth habitat available all around the island. Past population studies have shown good numbers of smallmouth and other game fish. Just south of Island Park is Lundquist Bicentennial Park where we will be meeting for lunch. There is a small parking lot there as well as other surrounding businesses with parking available.

Just south of Island Park on the Elkhart River is Studebaker Park, which also offers some good fish habitat. This area is best fished by canoe or kayak unless the river level is low.

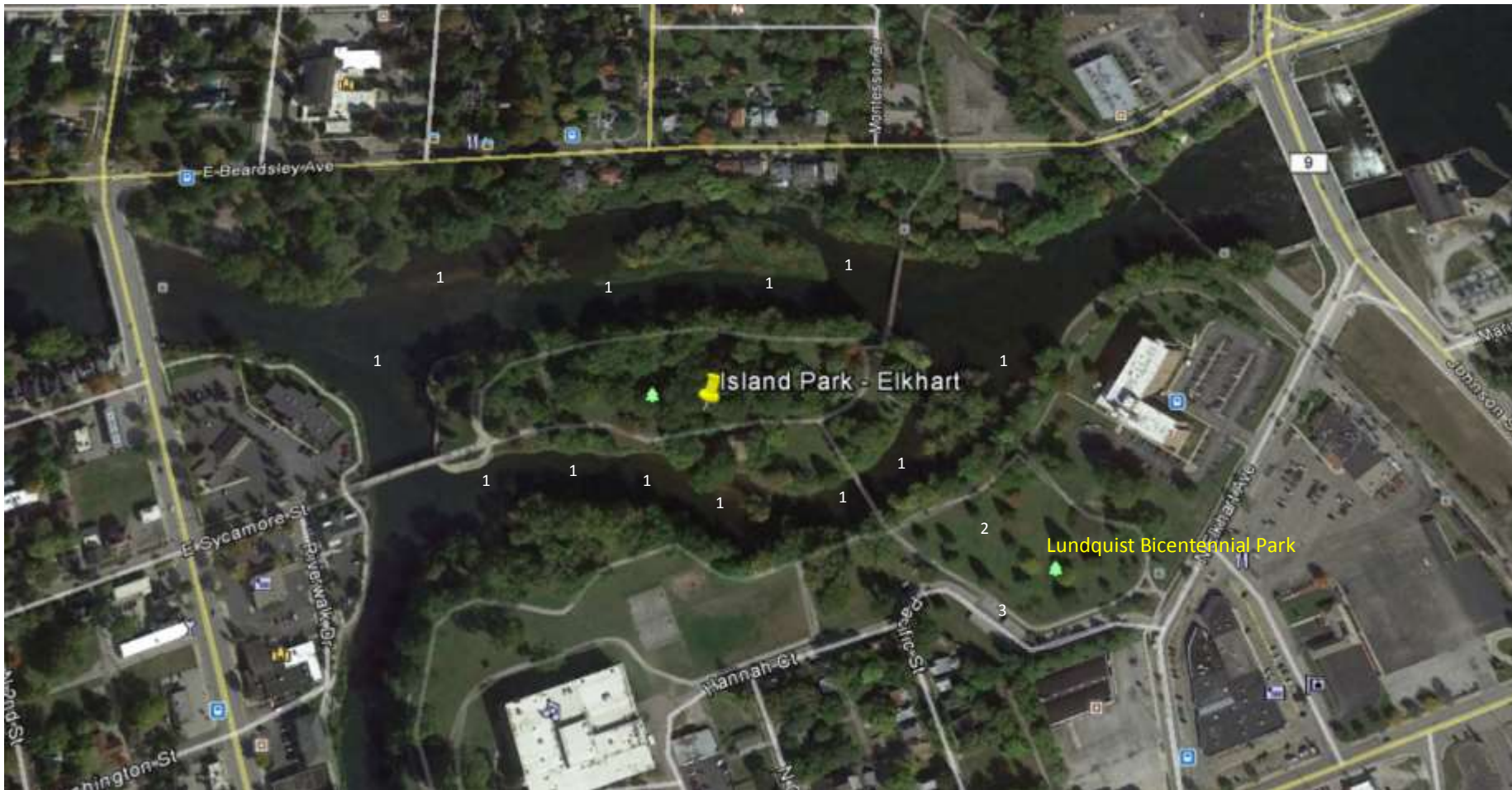
**Lunch:** We will meet at Lundquist Bicentennial Park at 12:30. We will grab a spot as close to the parking area as possible. The club will provide hot dogs and brats. Bring your own beverage of choice. Also, don't forget to bring a chair.

**Directions to Lundquist Bicentennial Park:**

Take US 20 to Elkhart  
Slight right to Toledo Road  
Right to Goshen Avenue  
Left to East Jackson Blvd.  
Right to Easy Shopping Place  
Left to North Elkhart Avenue  
Right to Pacific Street  
Arrive at Bicentennial parking lot

**Directions to Studebaker Park:**

Take US 20 to Elkhart  
Slight right to Toledo Road  
Left to East Indiana Avenue  
Right to Troy Avenue  
Arrive at parking lot & canoe launch



## Island Park Area

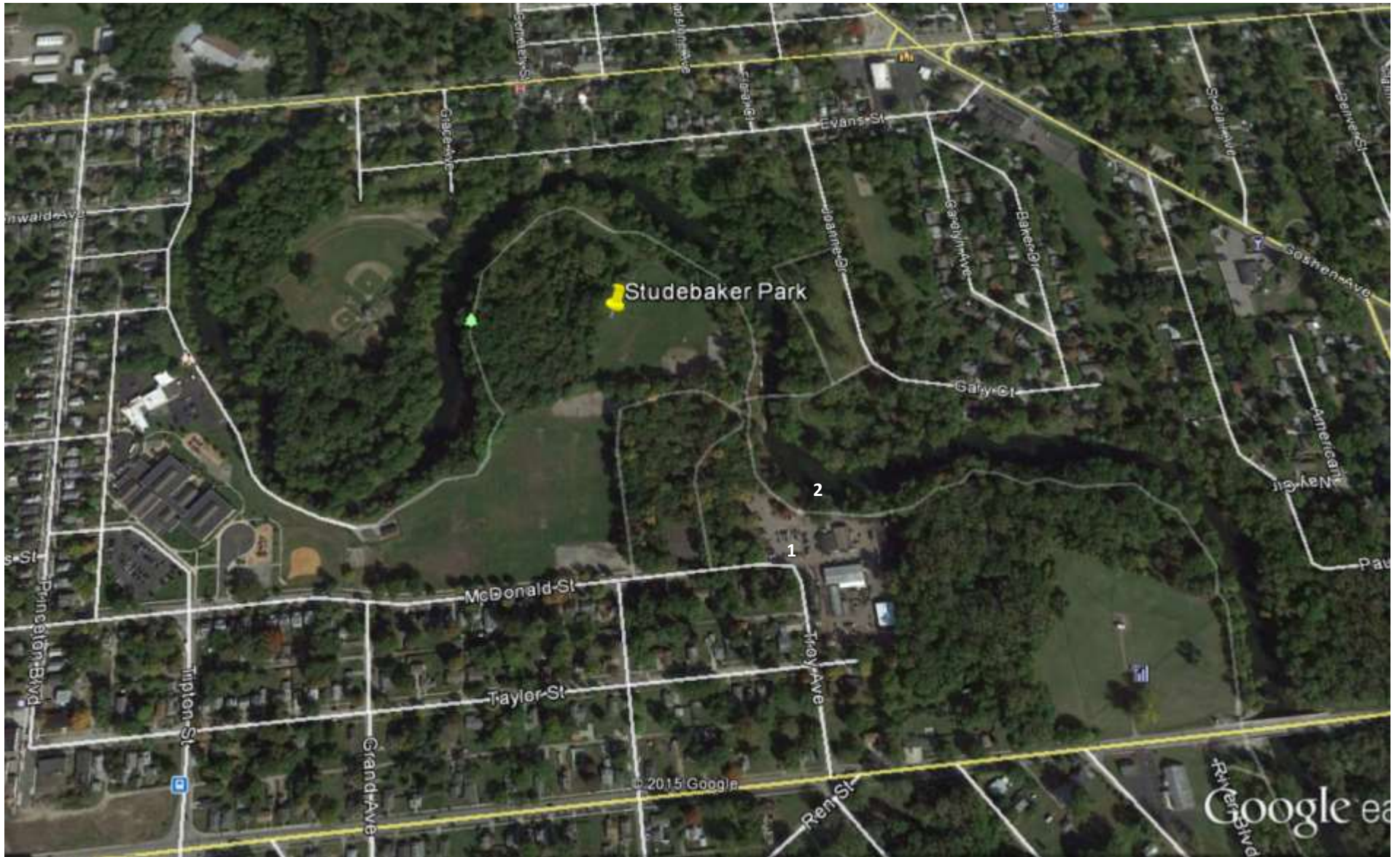
The river is wadeable all around Island Park. Access the island over the foot bridge. The whole run south of the island is a riffle area with numerous rocks. It should be good smallmouth habitat.

There is a deep run north of the island which is not wadeable. Cross over the north foot bridge and then down to access the north shore line. This area is wadeable.

There is some parking at Lundquist Bicentennial Park just south of Island Park. In case the parking area is filled up, there are numerous business parking lots adjacent which should be empty on Sunday.

Legend:

- 1 Wadeable areas
- 2 Probable lunch site
- 3 Parking



## Studebaker Park Area

Best fished with canoe or kayak. If water levels are low, parts of the park area may be wadeable. There is a foot path along the river all along the park. Most of the good cover is on the opposite side of the river along the bank. There are plenty of downed trees and other cover to fish there. From the parking area and the canoe launch, the foot path goes both upstream and downstream.

### Legend:

- 1 Parking
- 2 Canoe launch